

图 108 触形伪塔姆蛛 *Pseudotamgrinia palpator* (Hu & Li, 1987)

A. 雄蛛背面观 (Male body, dorsal view); B. 雌蛛外雌器腹面观 (Epigynum, ventral view); C. 同上, 背面观 (Same, dorsal view); D. 雄蛛左触肢内侧面观 (Left palp of male, prolateral view); E. 同上, 腹面观 (Same, ventral view); F. 同上, 外侧面观 (Same, retrolateral view).

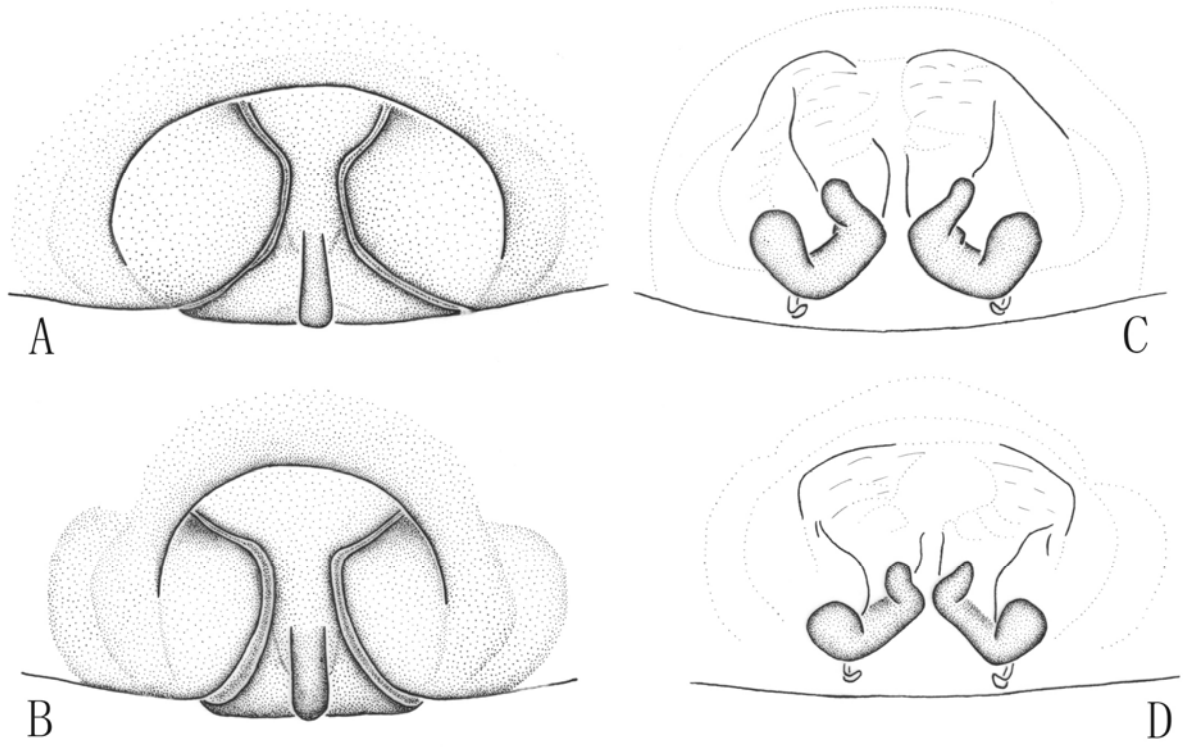


图 109 西藏塔姆蛛 *Tamgrinia tibetana* (Hu & Li, 1987)

A-B. 雌蛛外雌器腹面观 (Epigynum, ventral view); C-D. 同上, 背面观 (Same, dorsal view)

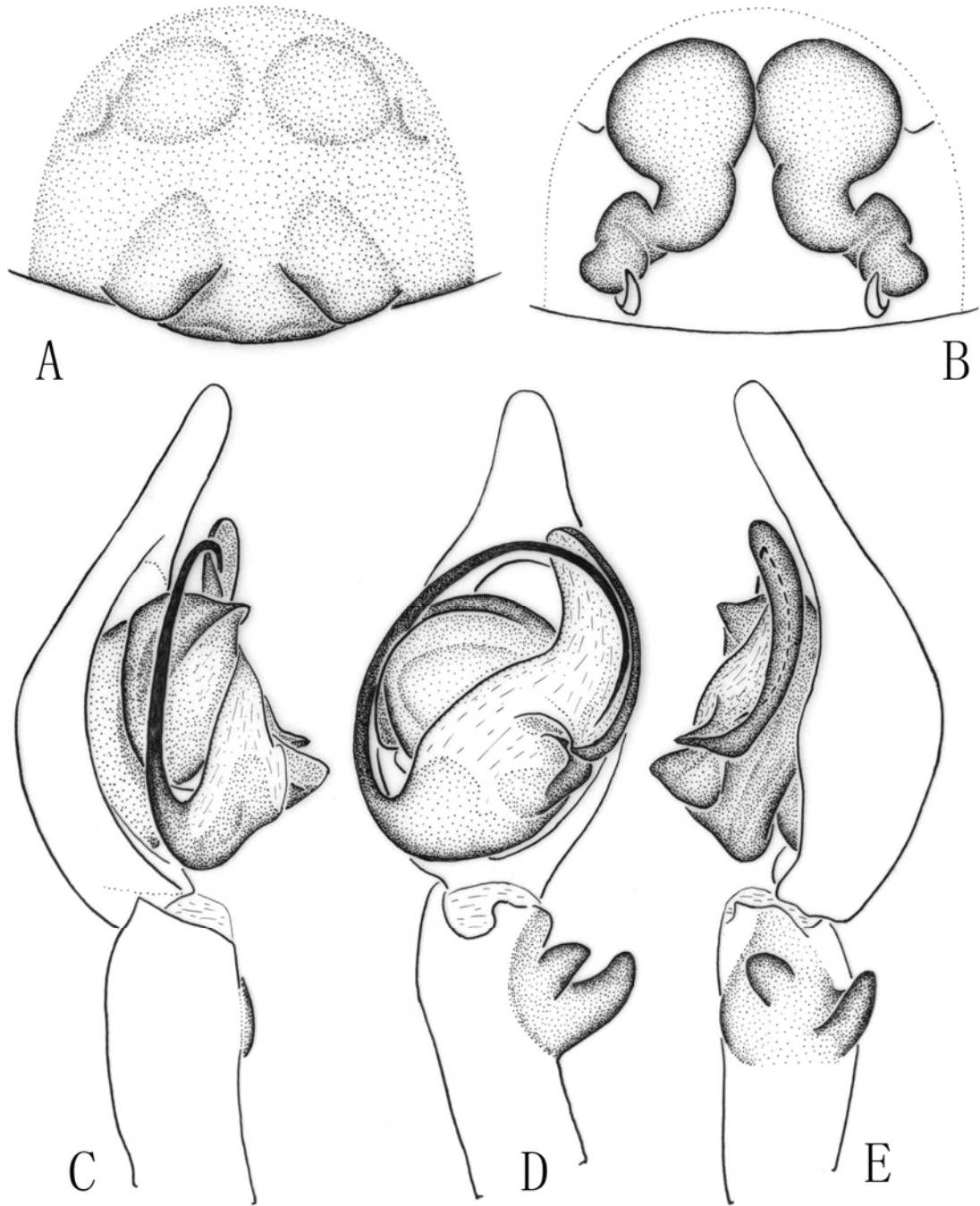


图 110 刺隅蛛 *Tegenaria aculeata* Wang, 1992

A. 雌蛛外雌器腹面观 (Epigynum, ventral view); B. 同上, 背面观 (Same, dorsal view); C. 雄蛛左触肢内侧面观 (Left palp of male, prolateral view); D. 同上, 腹面观 (Same, ventral view); E. 同上, 外侧面观 (Same, retrolateral view).

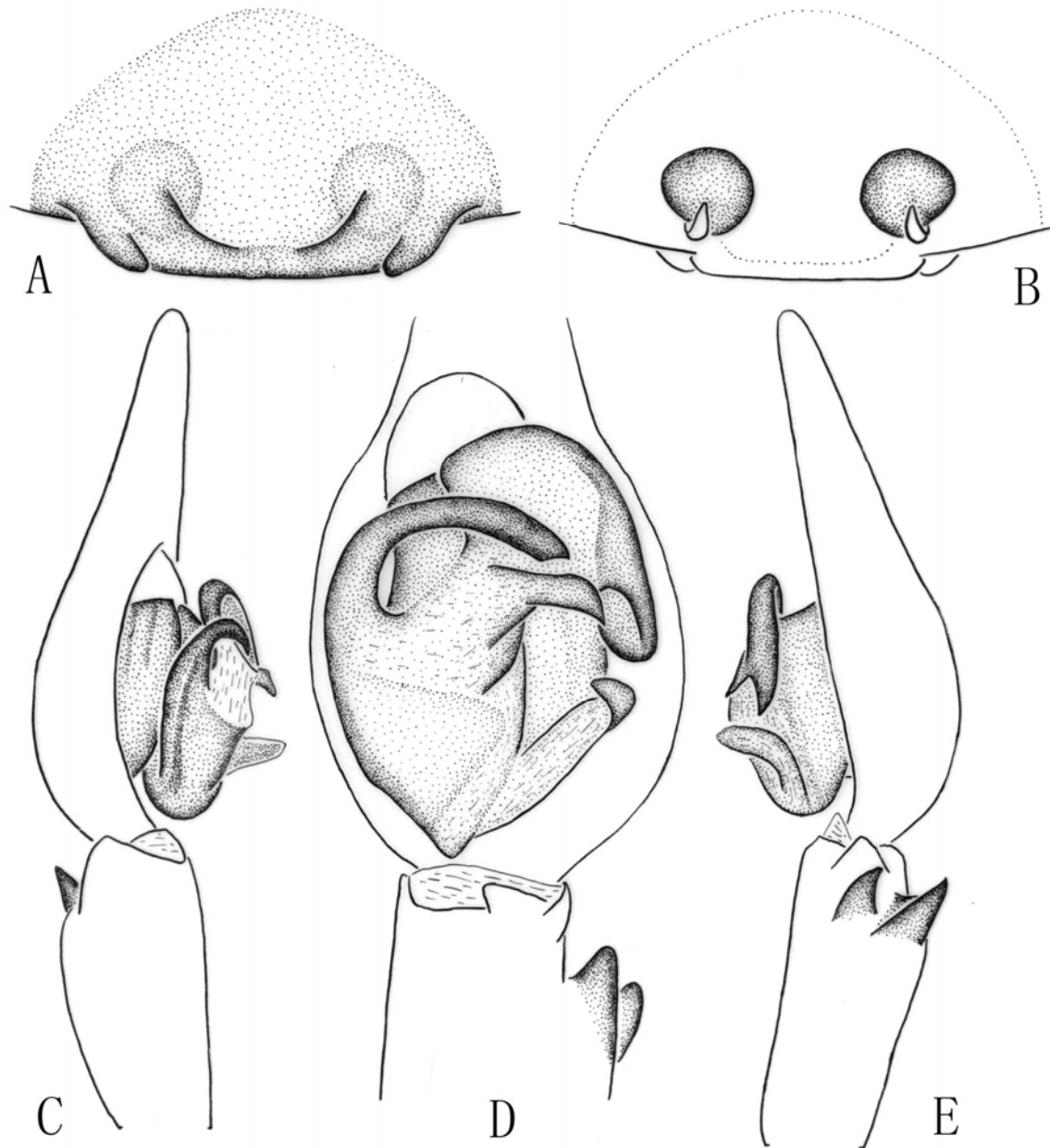


图 111 家隅蛛 *Tegenaria domestica* (Clerck, 1757)

A. 雌蛛外雌器腹面观 (Epigynum, ventral view); B. 同上, 背面观 (Same, dorsal view); C. 雄蛛左触肢内侧面观 (Left palp of male, prolateral view); D. 同上, 腹面观 (Same, ventral view); E. 同上, 外侧面观 (Same, retrolateral view).

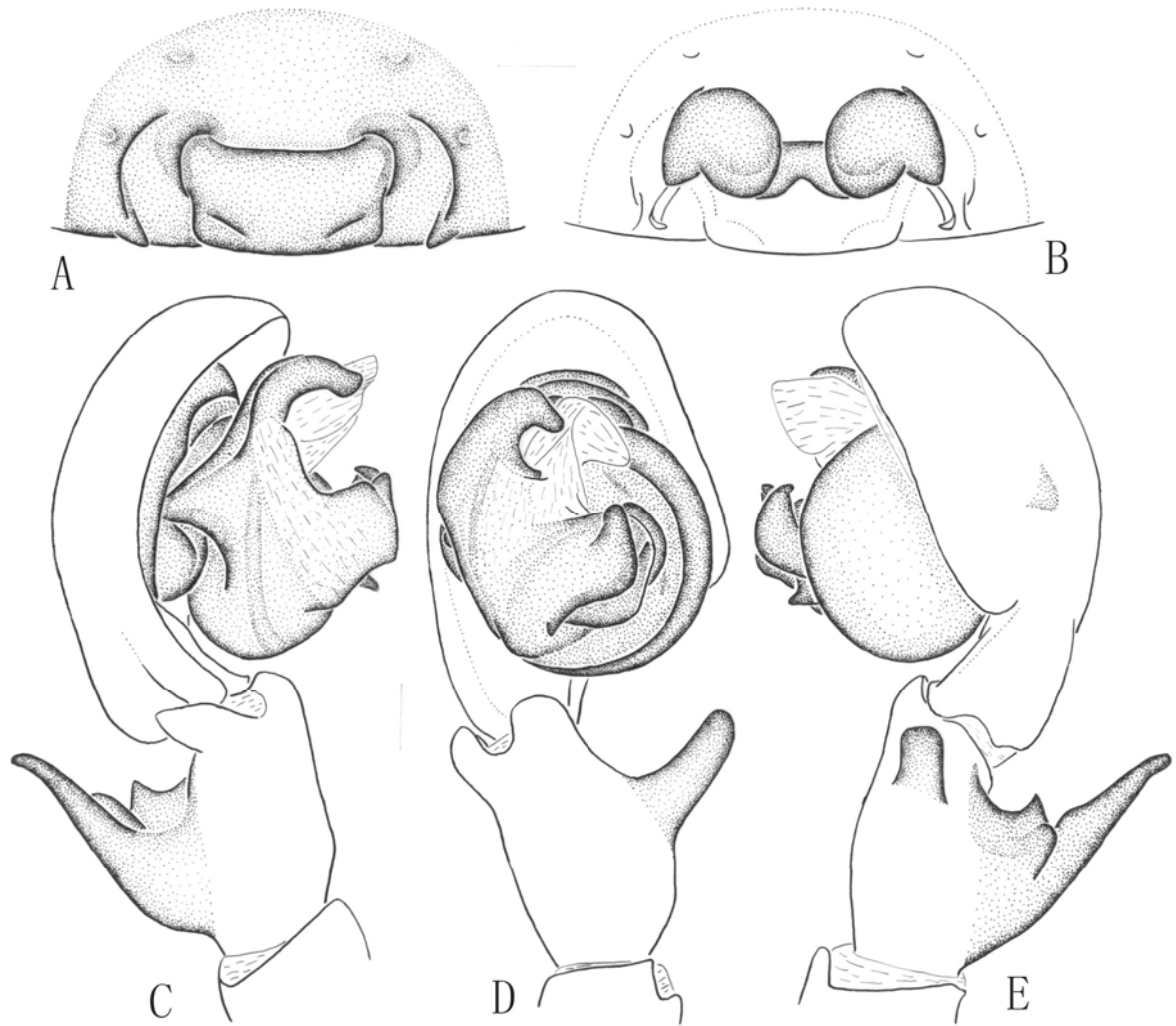


图 112 窗暗蛛 *Amaurobius fenestralis* (Ström, 1768)

A. 雌蛛外雌器腹面观 (Epigynum, ventral view); B. 同上, 背面观 (Same, dorsal view); C. 雄蛛左触肢内侧面观 (Left palp of male, prolateral view); D. 同上, 腹面观 (Same, ventral view); E. 同上, 外侧面观 (Same, retrolateral view).

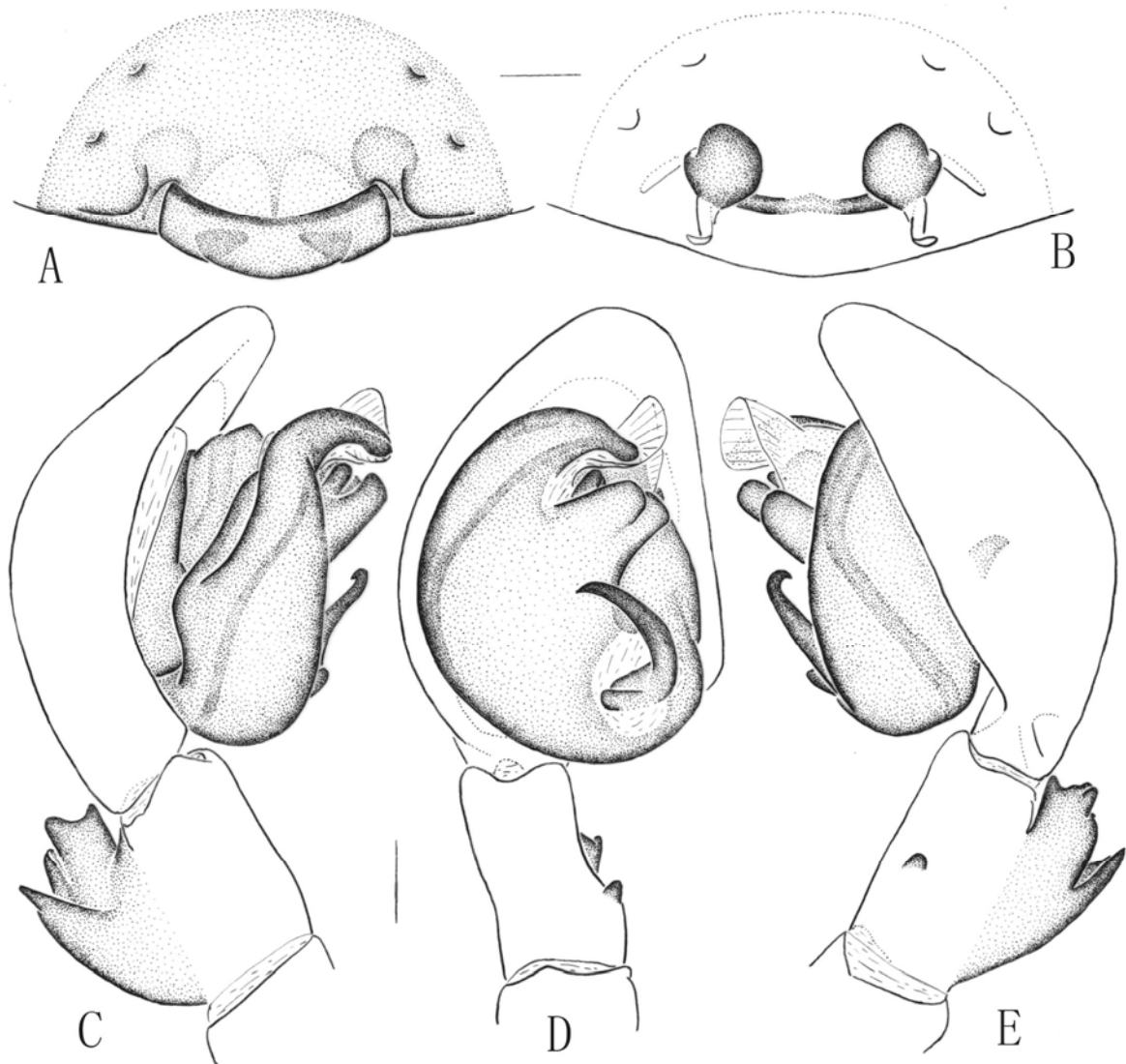


图 113 苍山胎拉蛛，新种 *Taira cangshan* sp. nov.

A. 雌蛛外雌器腹面观 (Epigynum, ventral view); B. 同上，背面观 (Same, dorsal view); C. 雄蛛左触肢内侧面观 (Left palp of male, prolateral view); D. 同上，腹面观 (Same, ventral view); E. 同上，外侧面观 (Same, retrolateral view).

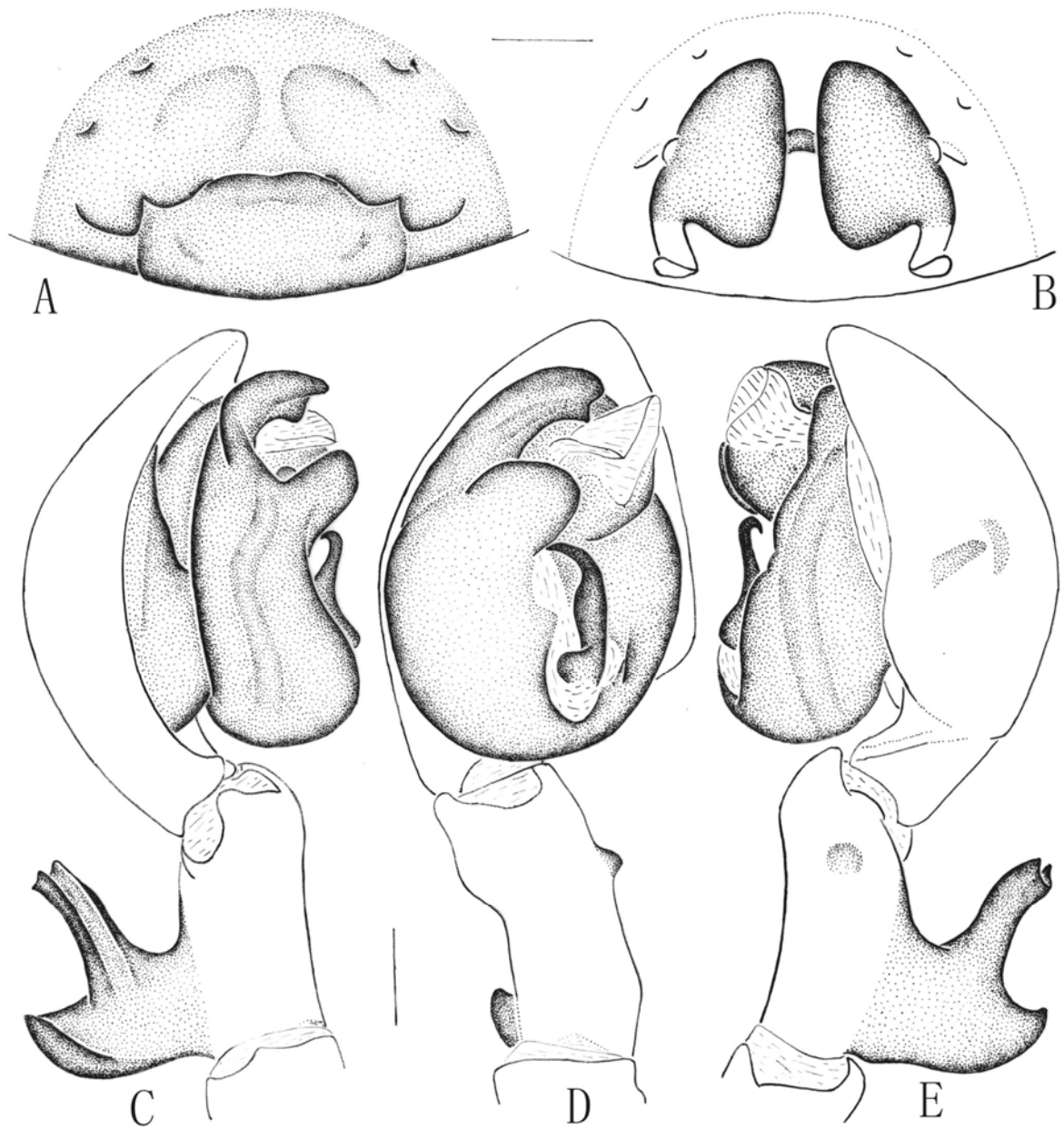


图 114 丽胎拉蛛 *Taira decorata* (Yin & Bao, 2001)

A. 雌蛛外雌器腹面观 (Epigynum, ventral view); B. 同上, 背面观 (Same, dorsal view); C. 雄蛛左触肢内侧面观 (Left palp of male, prolateral view); D. 同上, 腹面观 (Same, ventral view); E. 同上, 外侧面观 (Same, retrolateral view).

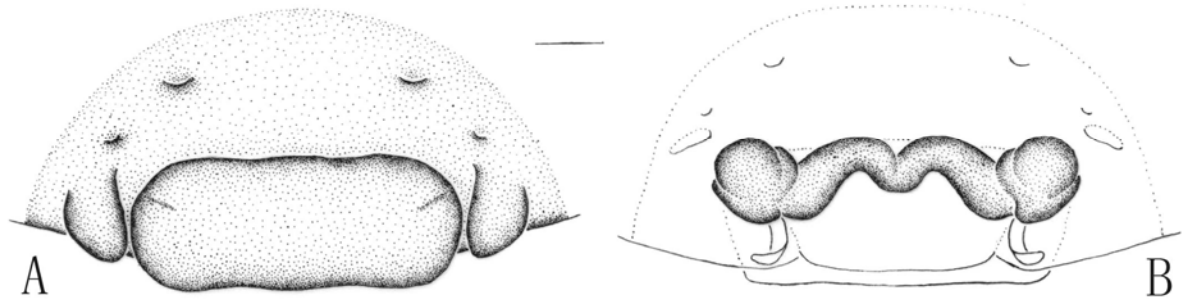


图 115 宽唇胎拉蛛, 新种 *Taira enrycheila* sp. nov.

A. 雌蛛外雌器腹面观 (Epigynum, ventral view); B. 同上, 背面观 (Same, dorsal view)

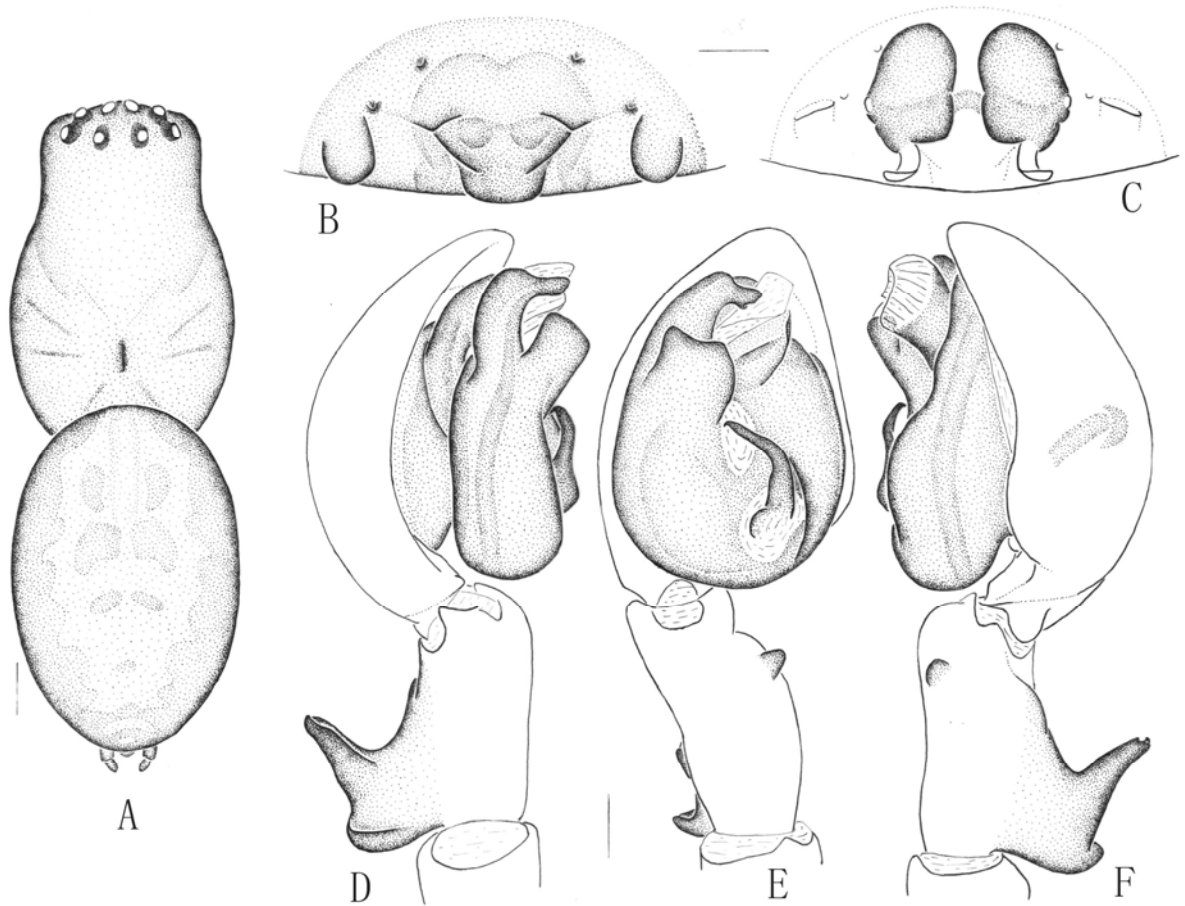


图 116 黄背胎拉蛛 *Taira flavidorsalis* (Yaginuma, 1964)

A. 雄蛛背面观 (Male body, dorsal view); B. 雌蛛外雌器腹面观 (Epigynum, ventral view); C. 同上, 背面观 (Same, dorsal view); D. 雄蛛左触肢内侧面观 (Left palp of male, prolateral view); E. 同上, 腹面观 (Same, ventral view); F. 同上, 外侧面观 (Same, retrolateral view).

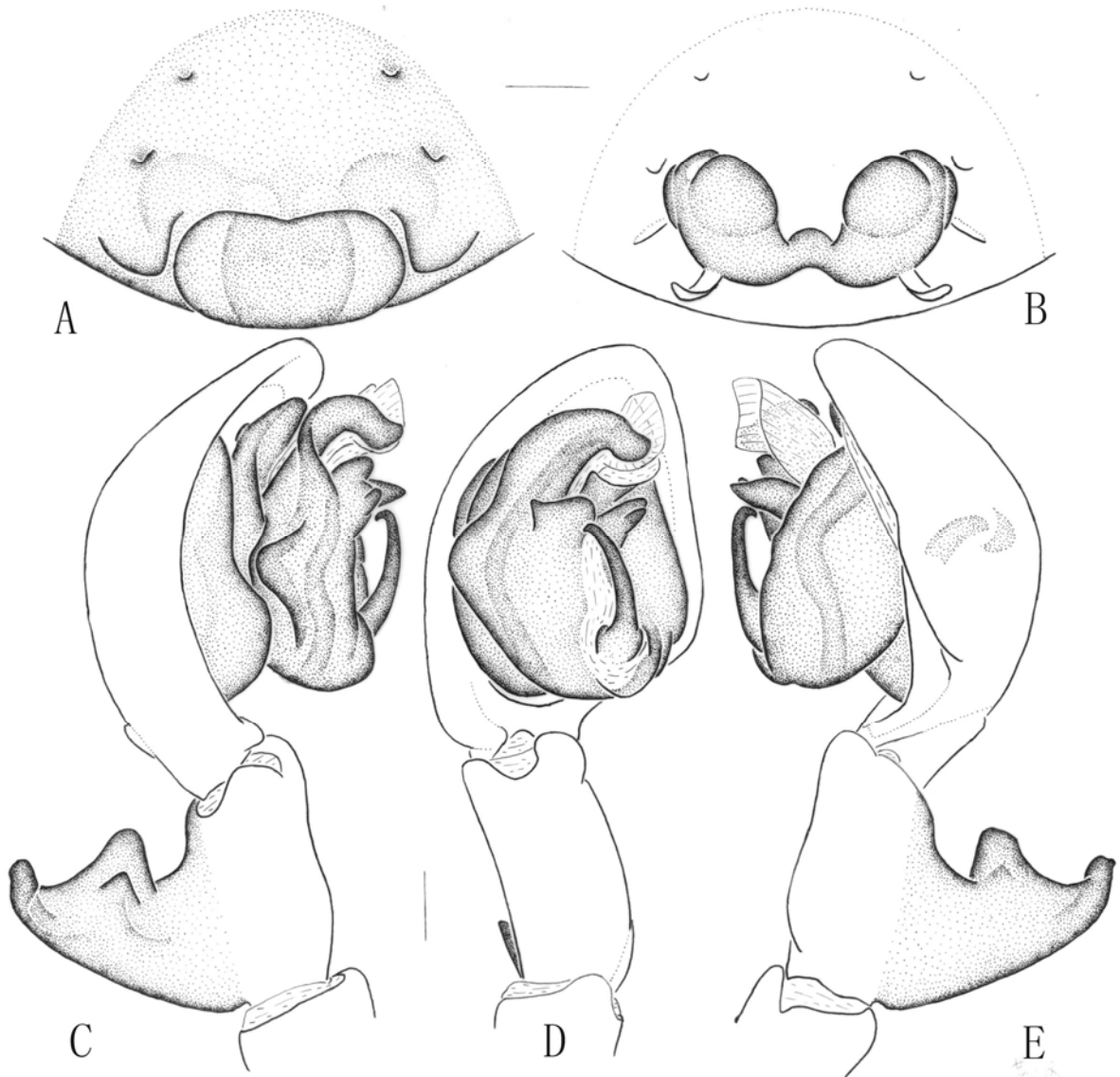


图 117 荔波胎拉蛛 *Taira liboensis* Zhu, Chen & Zhang, 2004

A. 雌蛛外雌器腹面观 (Epigynum, ventral view); B. 同上, 背面观 (Same, dorsal view); C. 雄蛛左触肢内侧面观 (Left palp of male, prolateral view); D. 同上, 腹面观 (Same, ventral view); E. 同上, 外侧面观 (Same, retrolateral view).

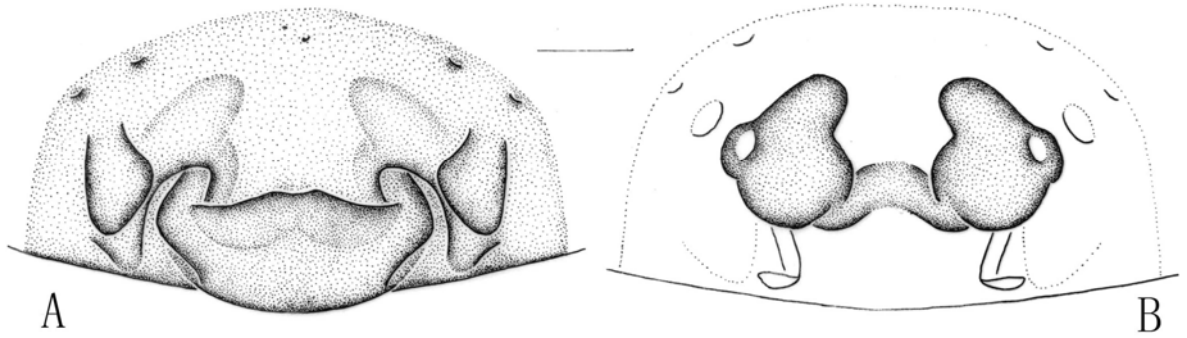


图 118 近丽胎拉蛛，新种 *Taira subdecorata* sp. nov.

A. 雌蛛外雌器腹面观 (Epigynum, ventral view); B. 同上，背面观 (Same, dorsal view)

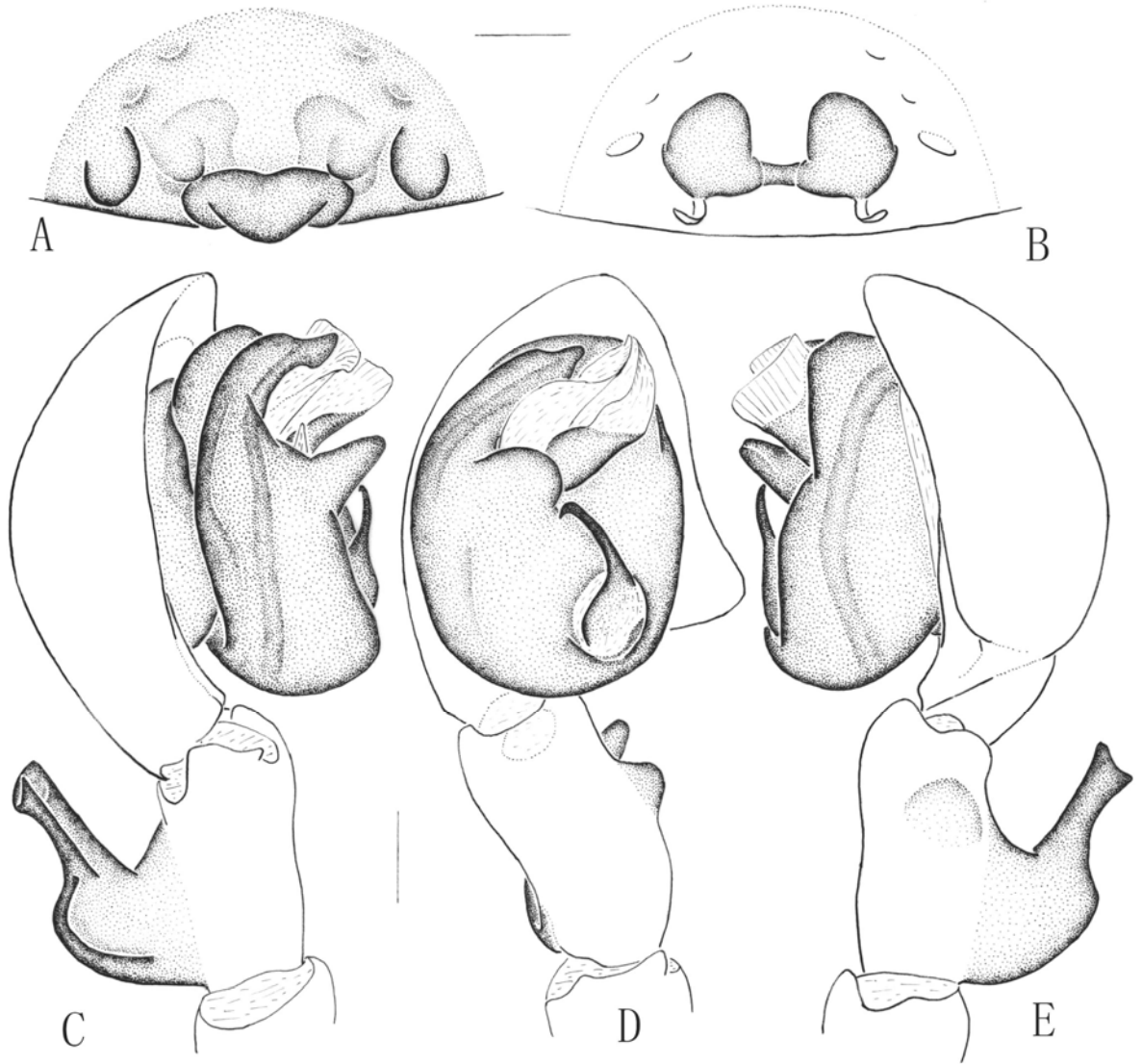


图 119 近槽胎拉蛛，新种 *Taira subsulciformis* sp. nov.

A. 雌蛛外雌器腹面观 (Epigynum, ventral view); B. 同上，背面观 (Same, dorsal view); C. 雄蛛左触肢内侧面观 (Left palp of male, prolateral view); D. 同上，腹面观 (Same, ventral view); E. 同上，外侧面观 (Same, retrolateral view).

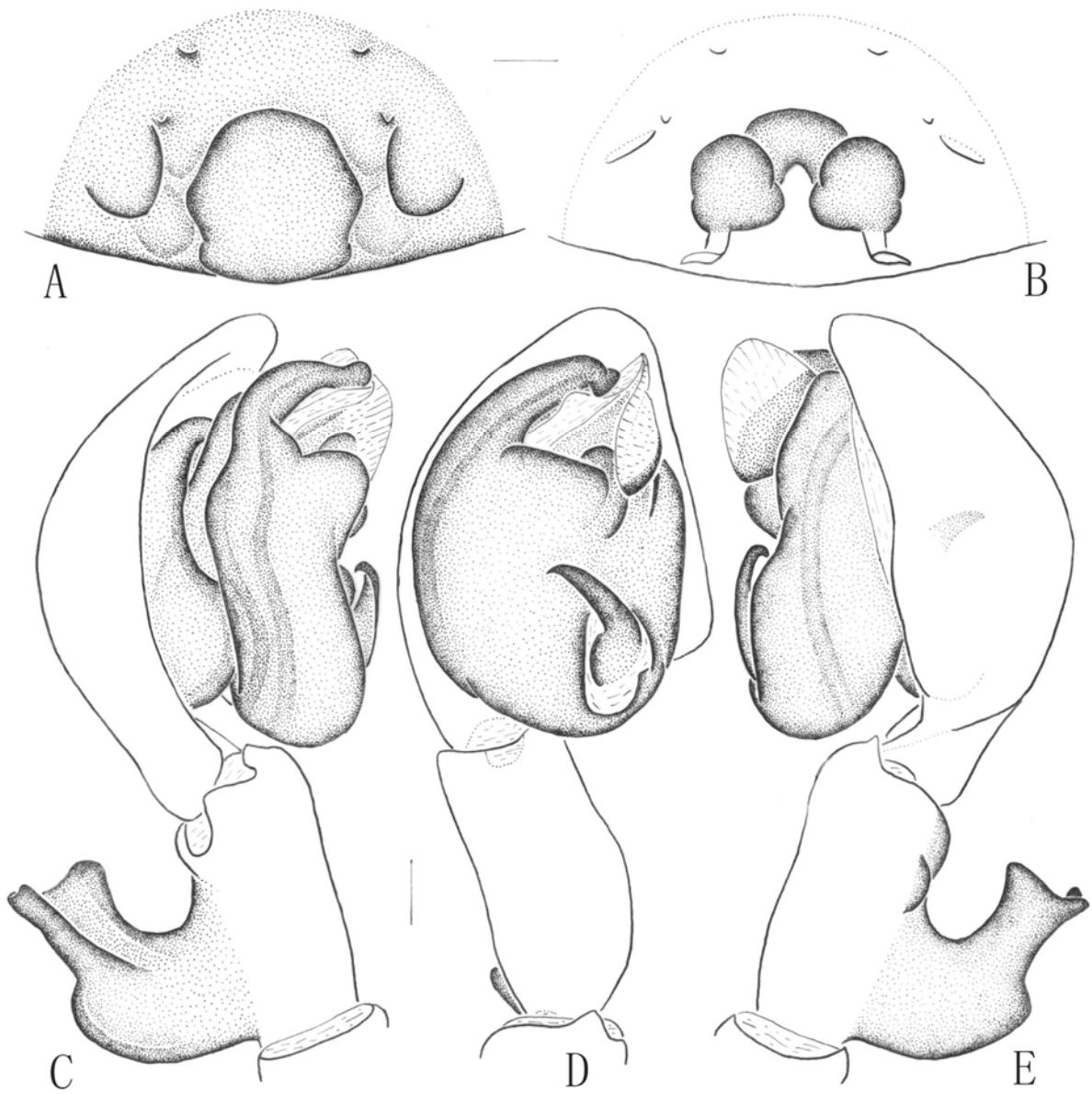


图 120 槽胎拉蛛，新种 *Taira sulciformis* sp. nov.

A. 雌蛛外雌器腹面观 (Epigynum, ventral view); B. 同上，背面观 (Same, dorsal view); C. 雄蛛左触肢内侧面观 (Left palp of male, prolateral view); D. 同上，腹面观 (Same, ventral view); E. 同上，外侧面观 (Same, retrolateral view).

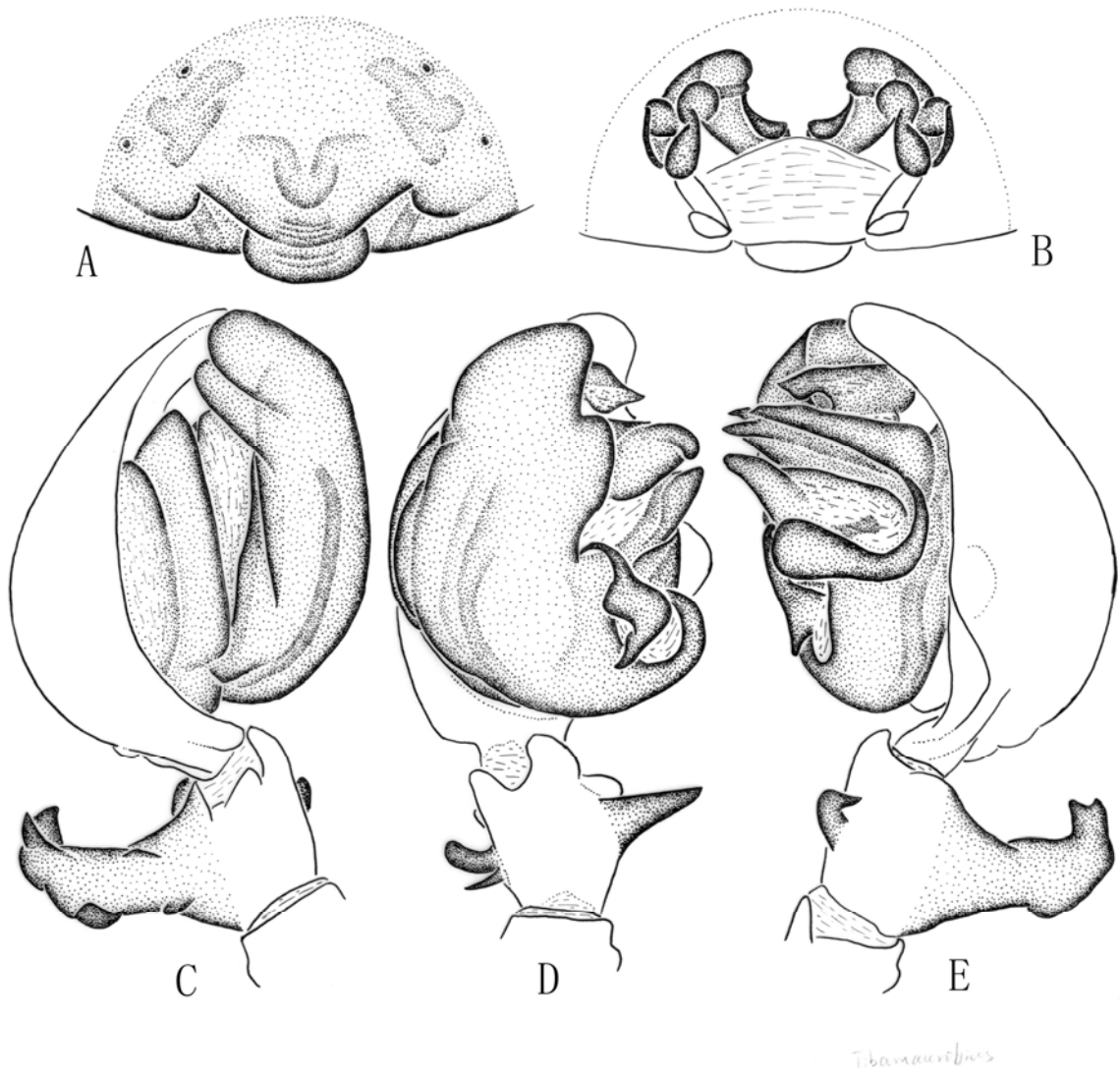
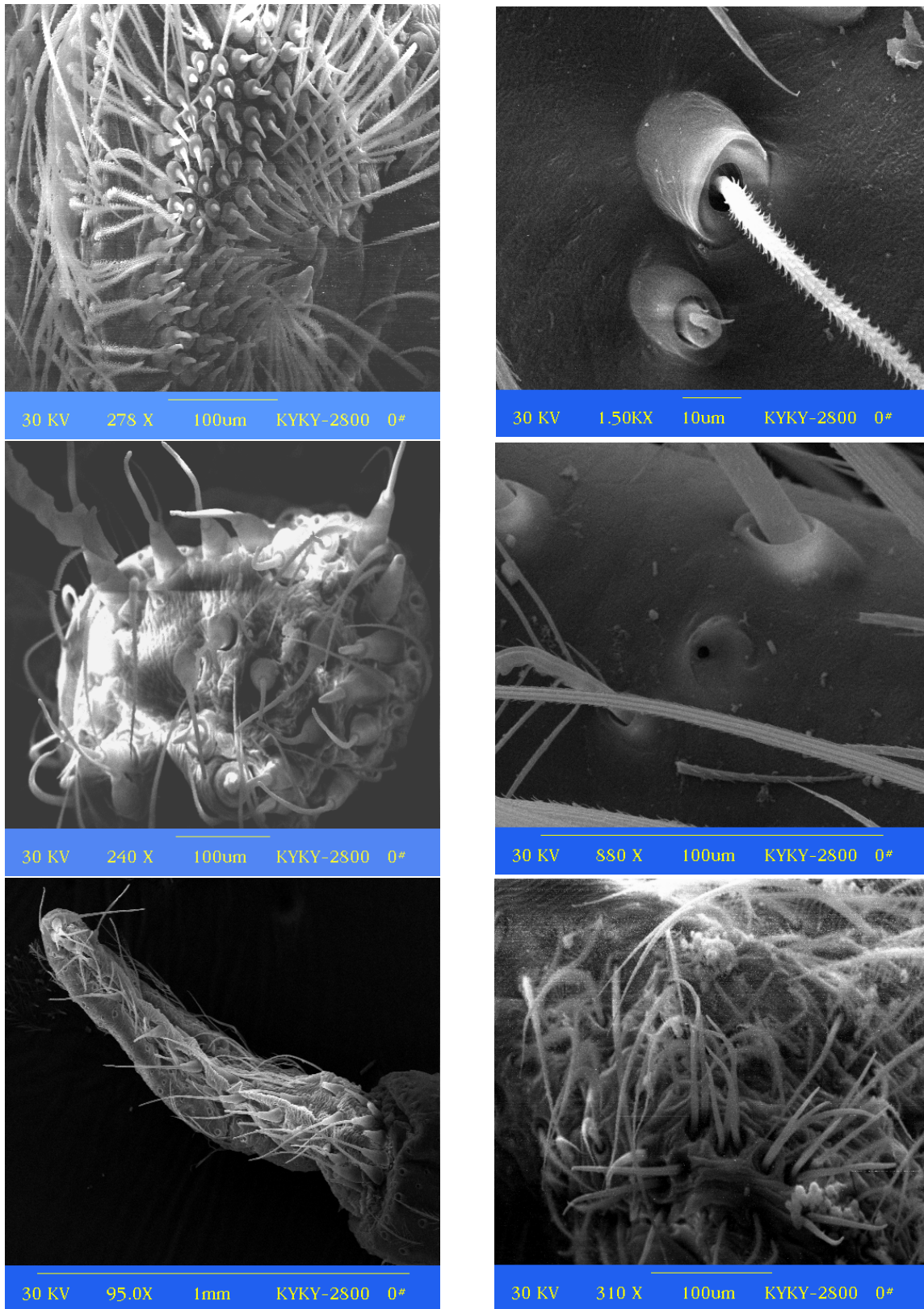


图 121 唇形脛暗蛛，新种 *Tibamaurobius labiatus* sp. nov.

A. 雌蛛外雌器腹面观 (Epigynum, ventral view); B. 同上，背面观 (Same, dorsal view); C. 雄蛛左触肢内侧面观 (Left palp of male, prolateral view); D. 同上，腹面观 (Same, ventral view); E. 同上，外侧面观 (Same, retrolateral view).



A | D 图122 迷宫漏斗蛛 *Agelena labyrinthica*. A. 前侧纺器 (ALS); B. 后中纺器 (PMS); C. 后侧纺器 (PLS); D. 听毛 (Trichobothrium); E. 跗节器 (Tarsal organ); C | F 雄孔上纺管 (Epiandrous spigots).

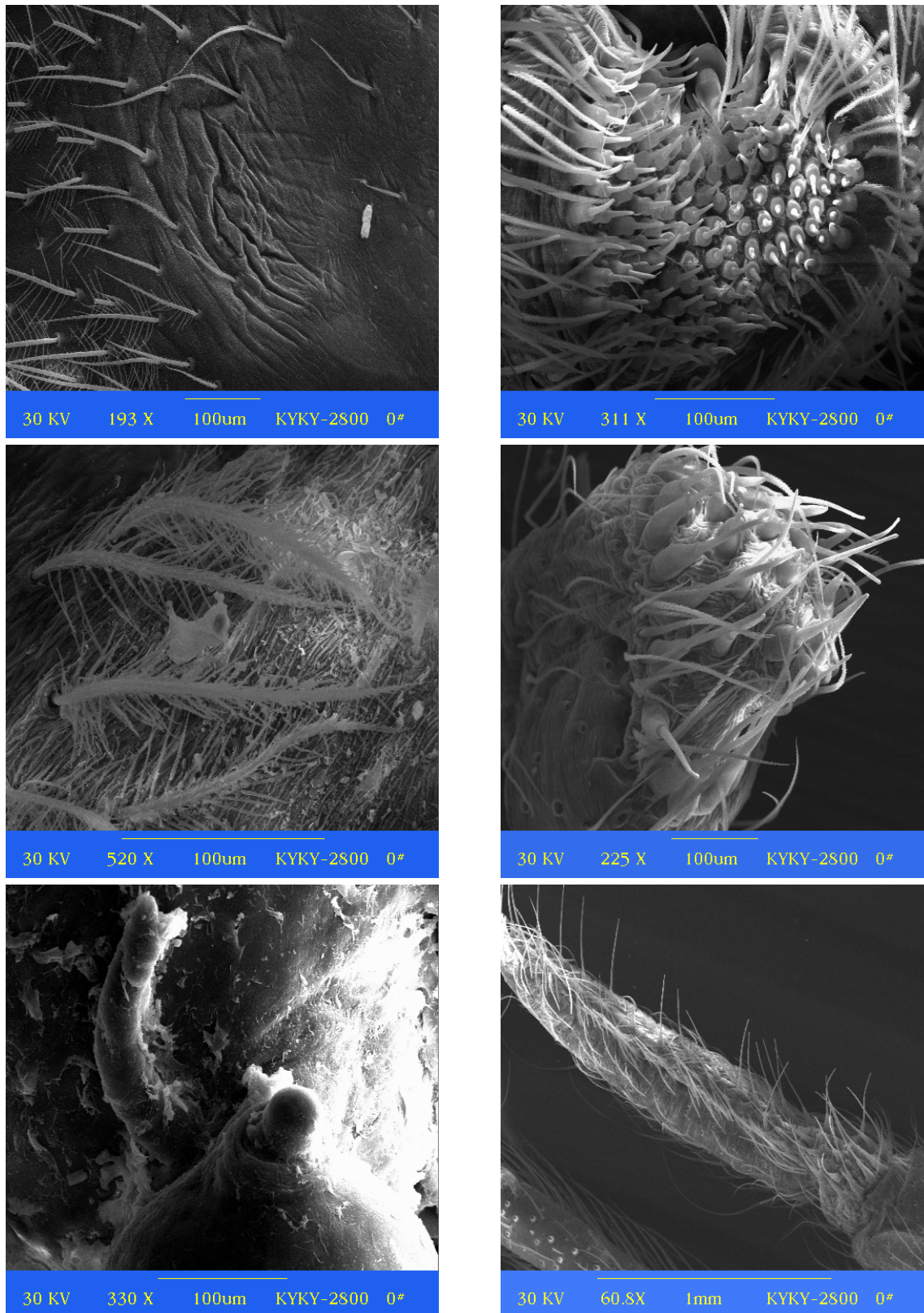
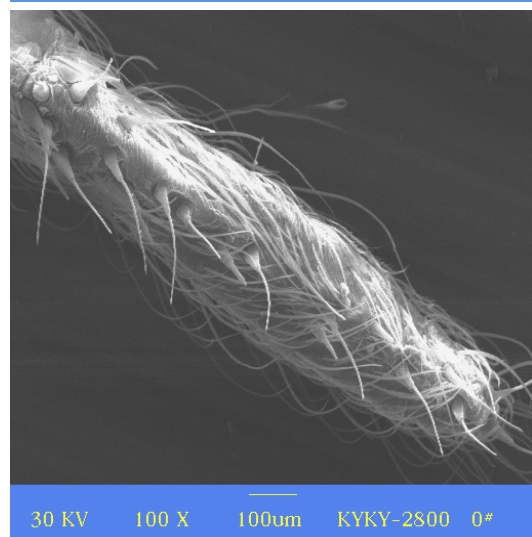
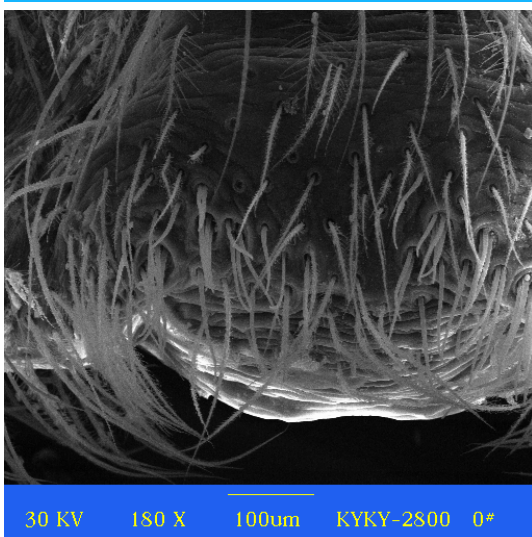
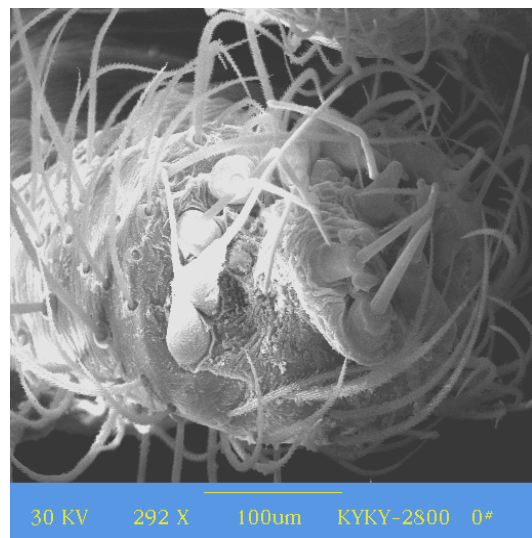
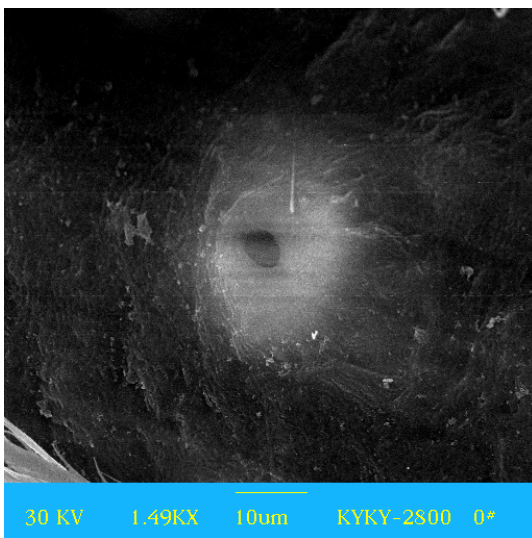
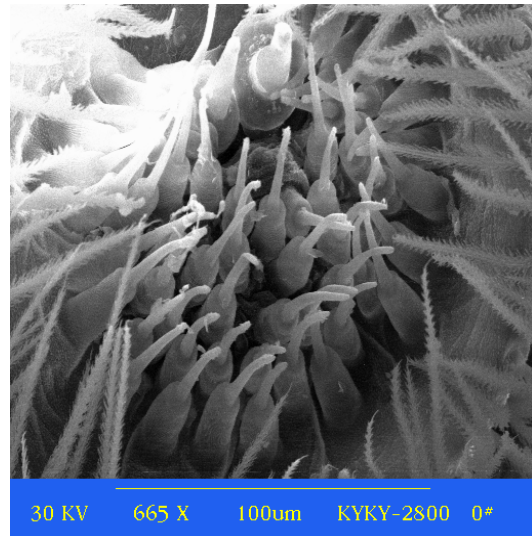
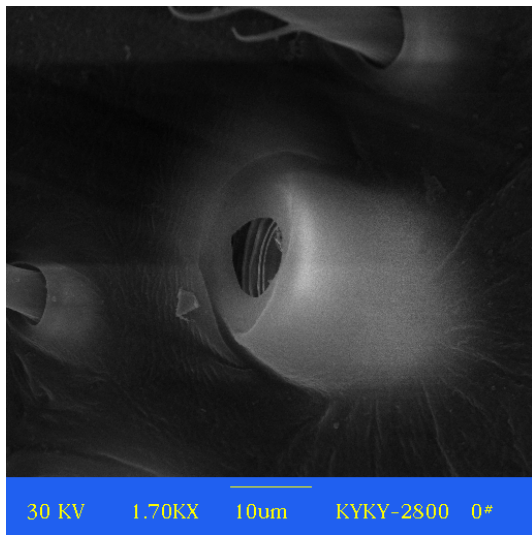
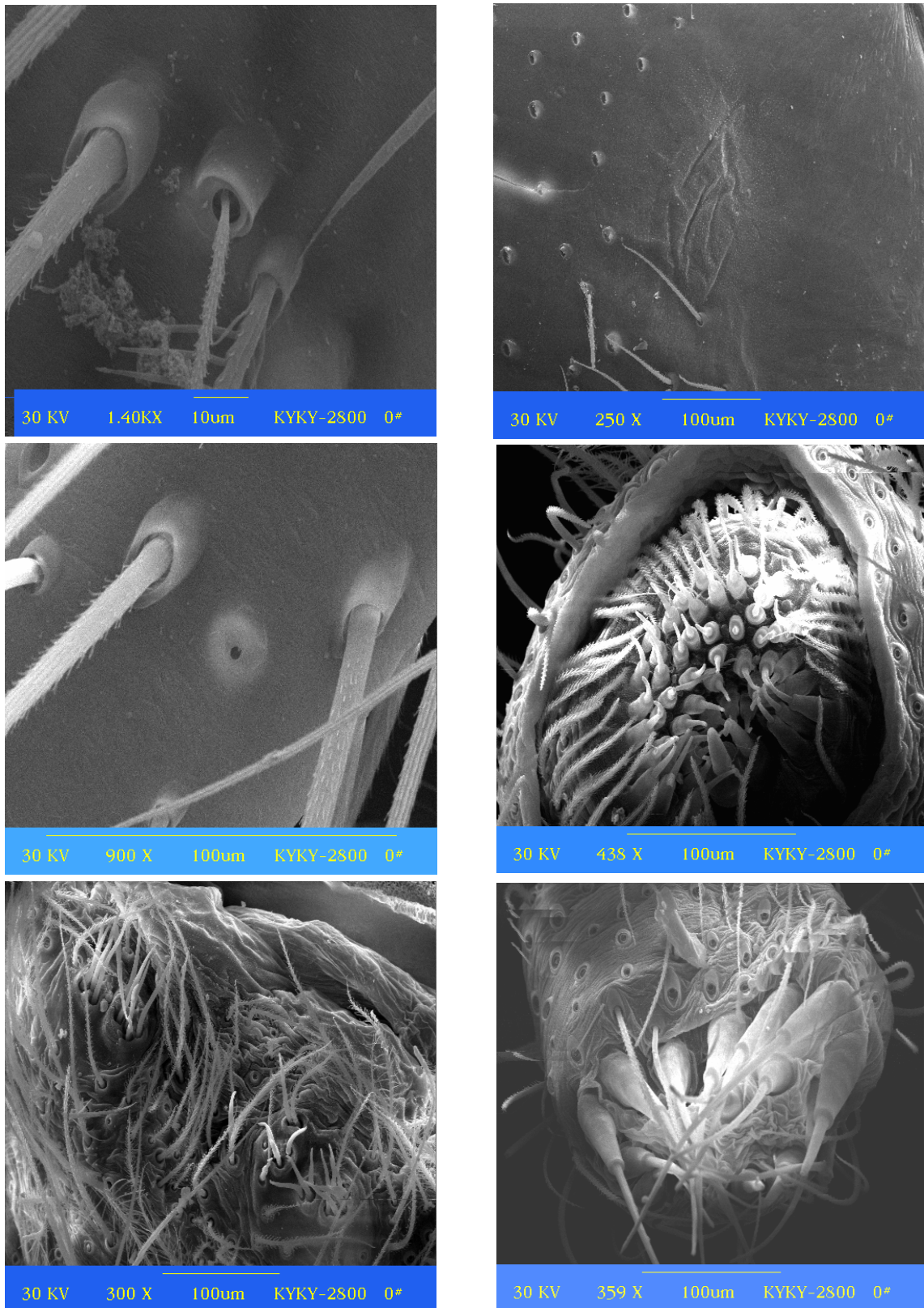


图123 迷宫漏斗蛛 *Agelena labyrinthica*(A-C)和森林漏斗蛛(D-F) *Agelena silvatica* (D-F). A. 基节后膜 (Retrocoxal hymen); B. 羽状毛 (Feathery hairs); C. 纳精囊头和纳精囊突 (Spermathecal heads and spermathecal apophysis); D. 前侧纺器 (ALS); E. 后中纺器 (PMS); F. 后侧纺器 (PLS).

六、图 版

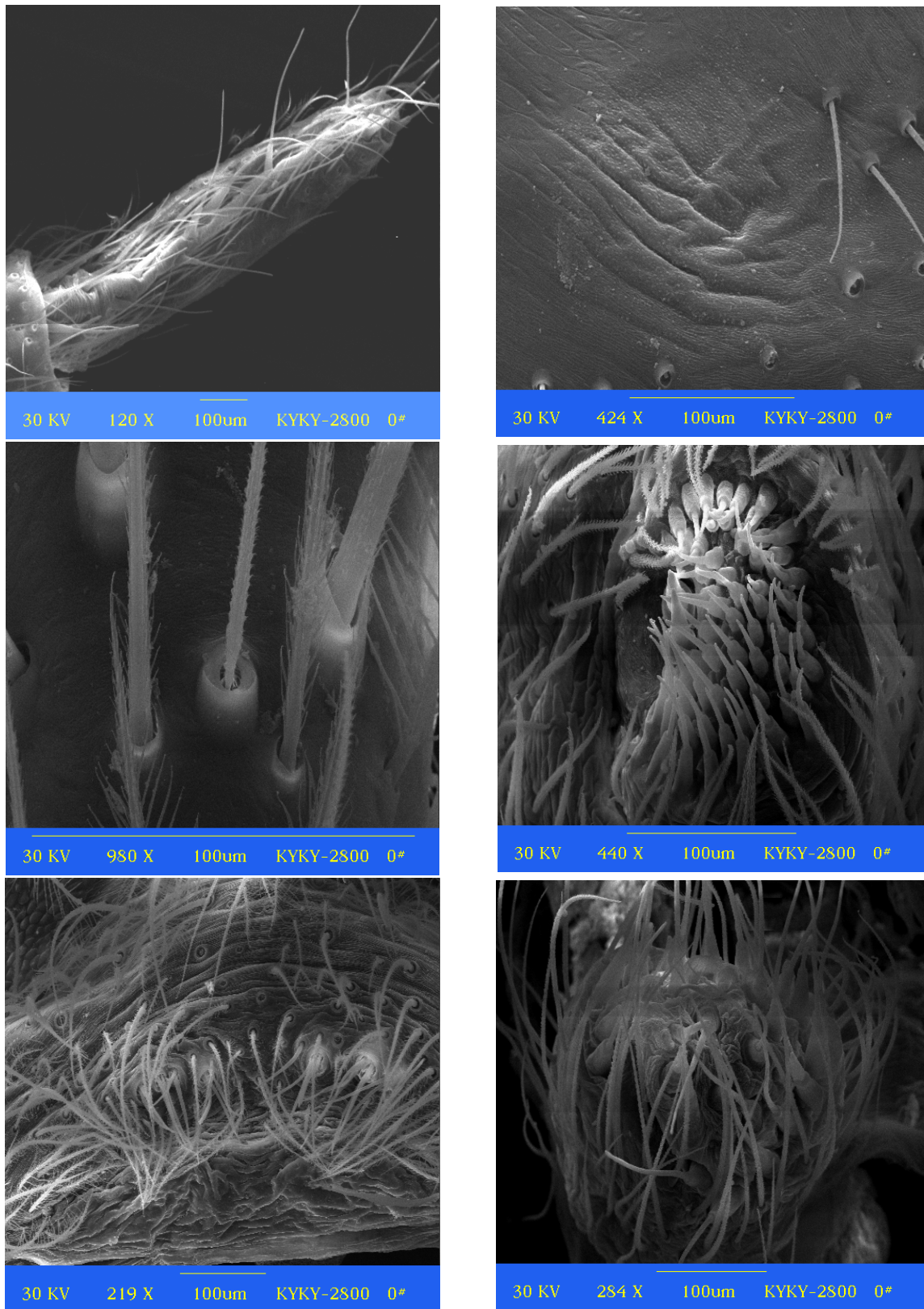


A	D	图124 森林漏斗蛛 <i>Agelena silvatica</i> (A-C) 和双纹异漏斗蛛 <i>Allagelena bistrata</i> (D-F). A. 听毛 (Trichobothrium); B. 跗节器 (Tarsal organ); C. 雄孔上纺管 (Epiandrous spigots); D. 前侧纺器 (ALS); E. 后中纺器 (PMS); F. 后侧纺器 (PLS).
B	E	
C	F	



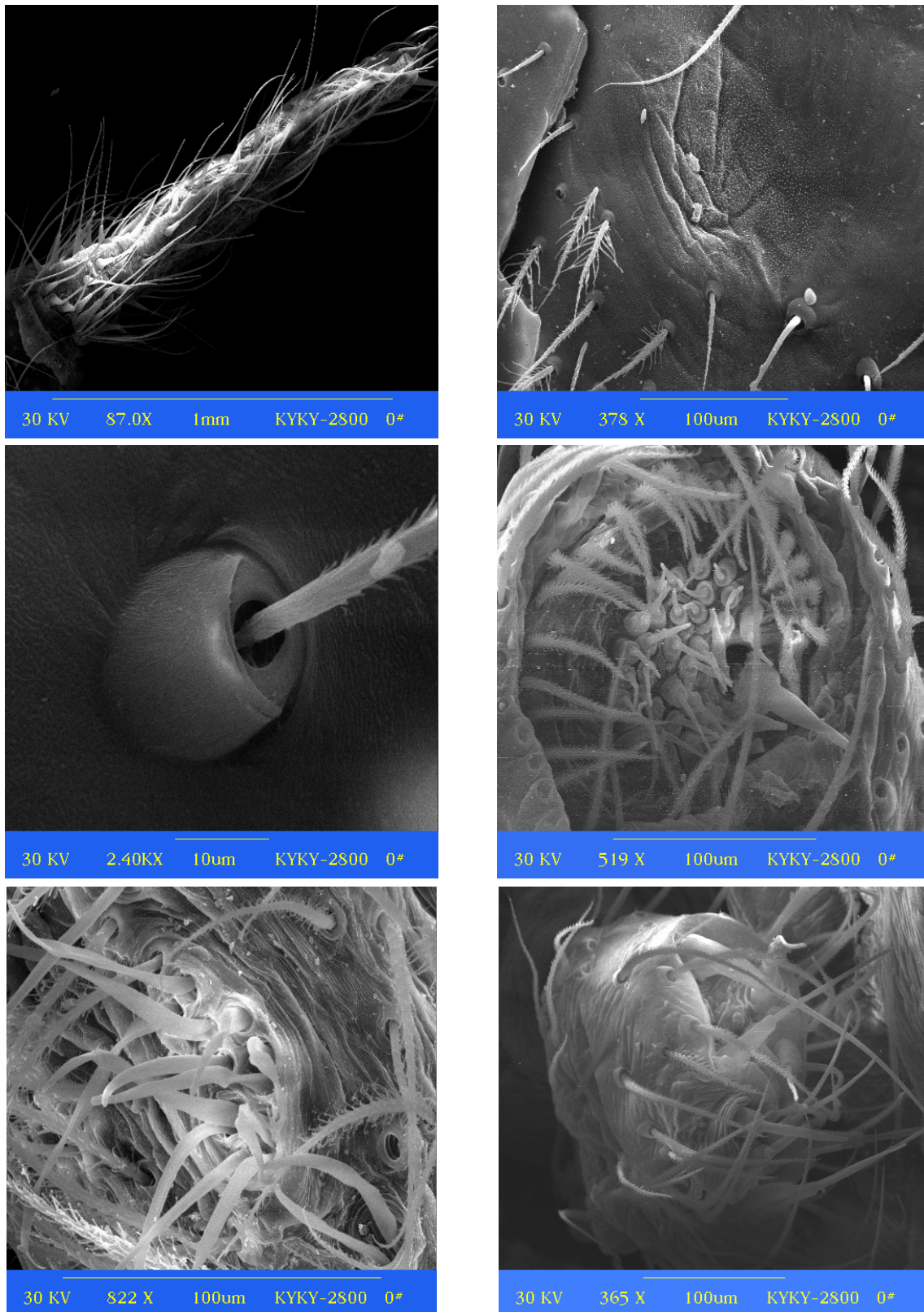
A	D	<p>图125 双纹异漏斗蛛 <i>Allagelena bistriata</i> (A-D) 和机敏异漏斗蛛 <i>Allagelena difficilis</i> (E-F). A. 听毛 (Trichobothrium); B. 跗节器 (Tarsal organ); C. 雄孔上纺管 (Epiandrous spigots); D. 基节后膜 (Retrocoxal hymen); E. 前侧纺器 (ALS); F. 后中纺器 (PMS).</p>
B	E	
C	F	

六、图 版



A	D
B	E
C	F

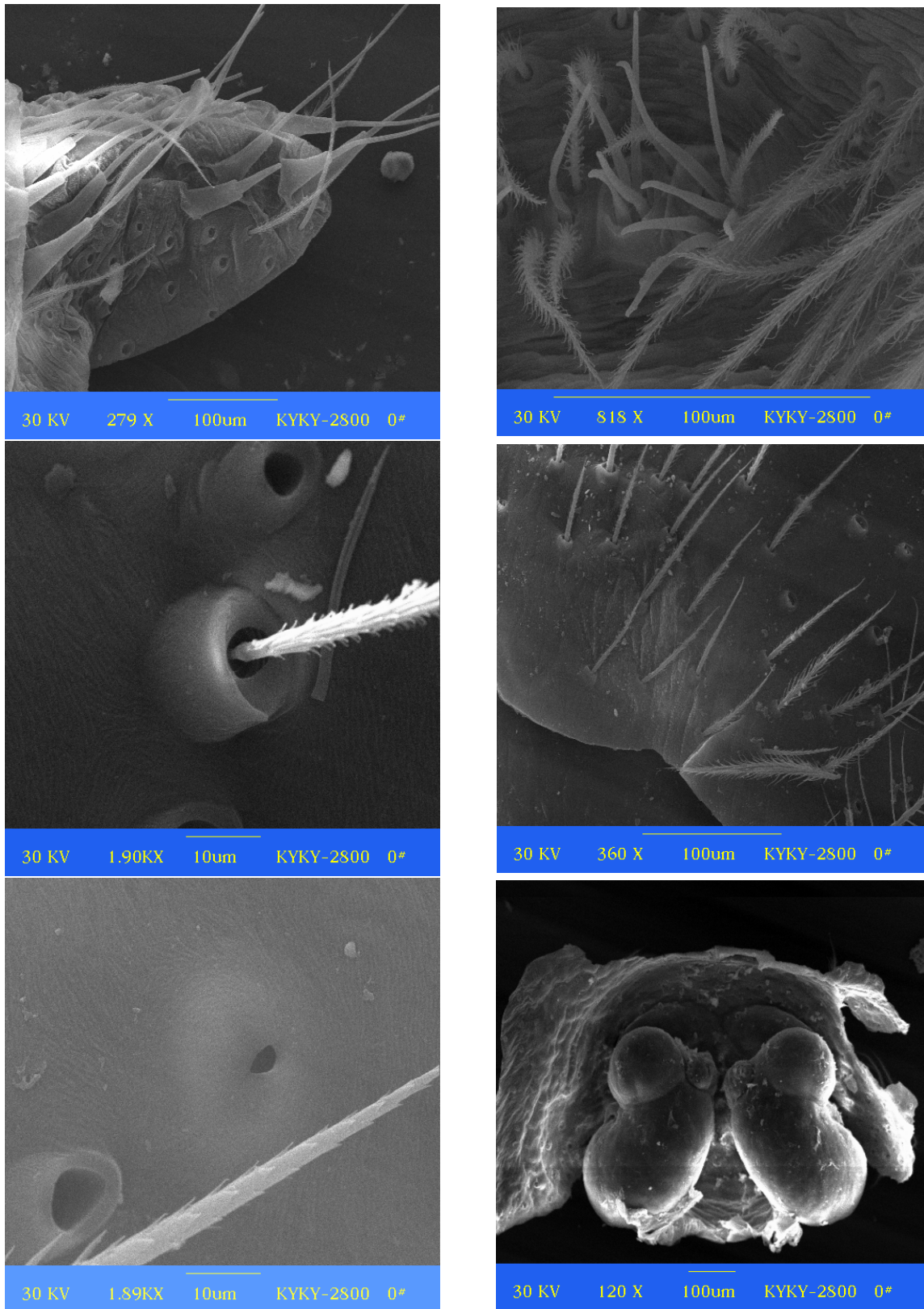
图126 机敏异漏斗蛛 *Allagelena difficilis* (A-D) 和朝鲜异漏斗蛛 *Allagelena koreana* (E-F). A. 后侧纺器 (PLS); B. 听毛 (Trichobothrium); C. 雄孔上纺管 (Epiandrous spigots); D. 基节后膜 (Retrocoxal hymen); E. 前侧纺器 (ALS); F. 后中纺器 (PMS).



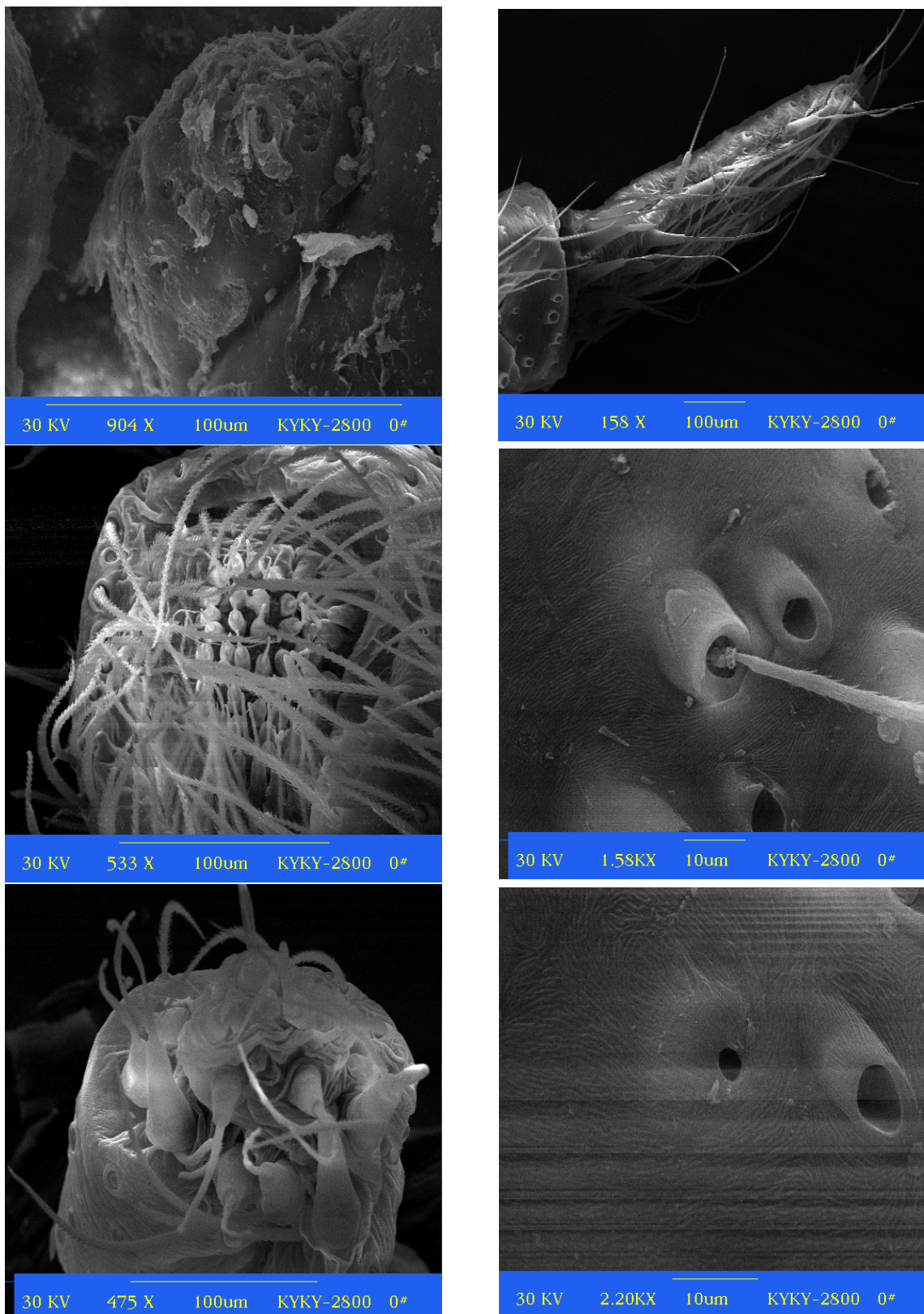
A	D
B	E
C	F

图127 朝鲜异漏斗蛛 *Allagelena koreana* (A-D) 和西藏湟源蛛 *Huangyuania tibetia* (E-F). A. 后侧纺器 (PLS); B. 听毛 (Trichobothrium); C. 雄孔上纺管 (Epiandrous spigots); D. 基节后膜 (Retrocoxal hymen); E. 前侧纺器 (ALS); F. 后中纺器 (PMS).

六、图 版



A | D 图 128 西藏湟源蛛 *Huangyuania tibetia*. A. 后侧纺器 (PLS); B. 听毛  
B | E (Trichobothrium); C. 跗节器 (Tarsal organ); D. 雄孔上纺管 (Epiandrous spigots);  
C | F E. 基节后膜 (Retrocoxal hymen); F. 外雌器背面观 (Epigynum. Dorsal view).



A | D 图129 西藏湟源蛛 *Huangyuania tibetia* (A)和家福新漏斗蛛 *Neagelena jiafu* (B-F).  
 B | E A. 纳精囊头 (Spermathecal head); B. 前侧纺器 (ALS); C. 后中纺器 (PMS); D. 后侧  
 C | F 纺器(PLS); E. 听毛 (Trichobothrium); F. 跗节器 (Tarsal organ).